

CHOKE VALVES & ACTUATORS

“Lifetime Partners of Your Well”

CHOKE VALVES

Engineered for Today’s Harsh Environments

Manufactured in accordance to API 6A / Q1, ABSA CRN, & NACE

Premium Flow Control Products

With customized equal percentage trim characteristic

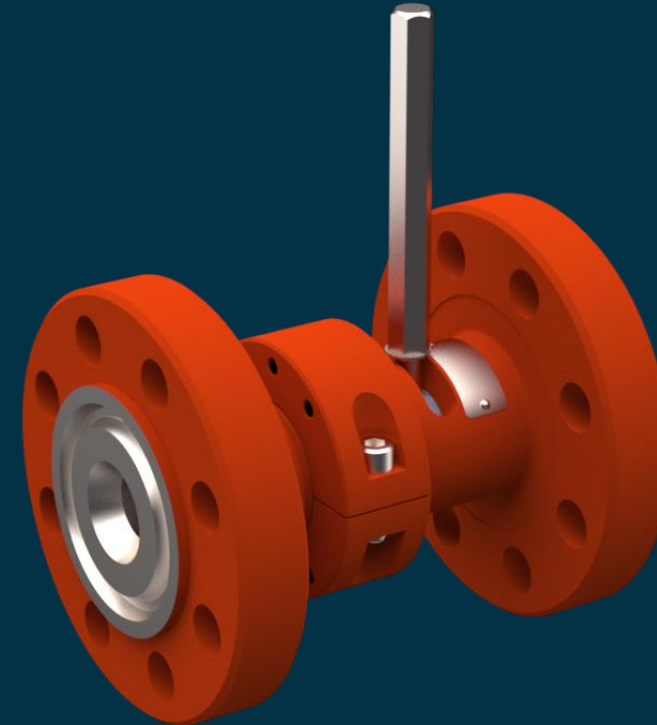
About New Star Flow Control

Reliable products for the oil & gas industry through engineering and quality

New Star Flow Control Inc. manufactures premium flow control products for high-performance oil and gas companies worldwide.

We combine rigorous research with our unique engineering capabilities to create products that deliver world-class results each and every time.

Being a world-class manufacturer of choke valves, New Star delivers quality product on time to our customers around the world

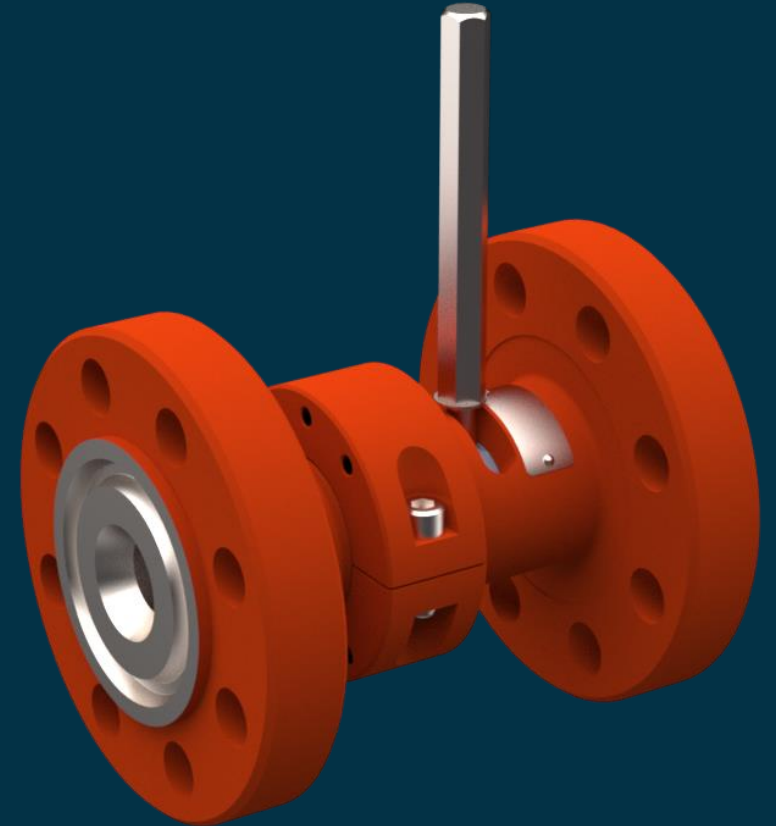


9822 - 44 Ave, Edmonton
Alberta, Canada T6E 5S5
+1 (780) 433-7098

www.newstarflowcontrol.com
info@newstarflowcontrol.com

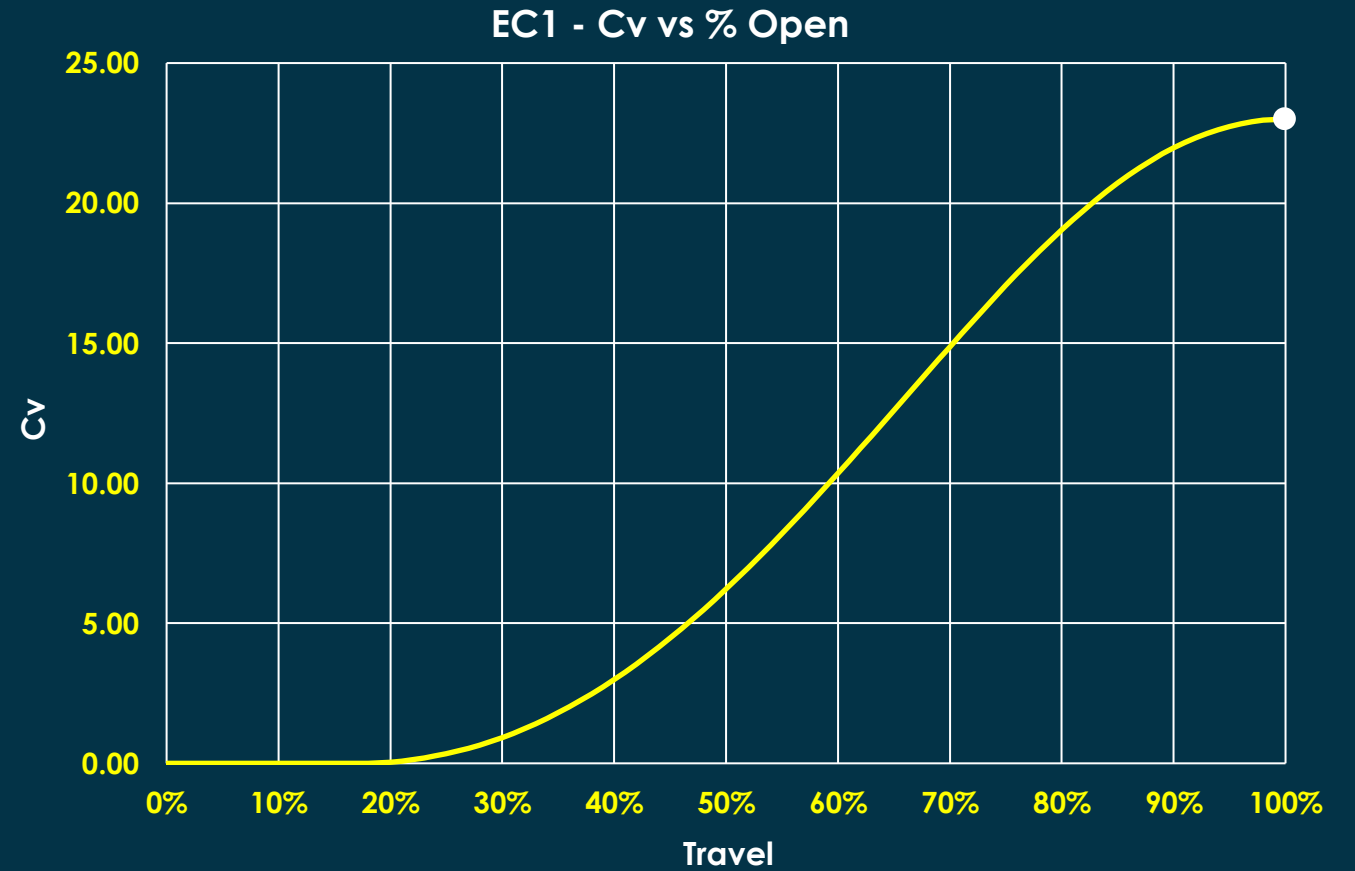
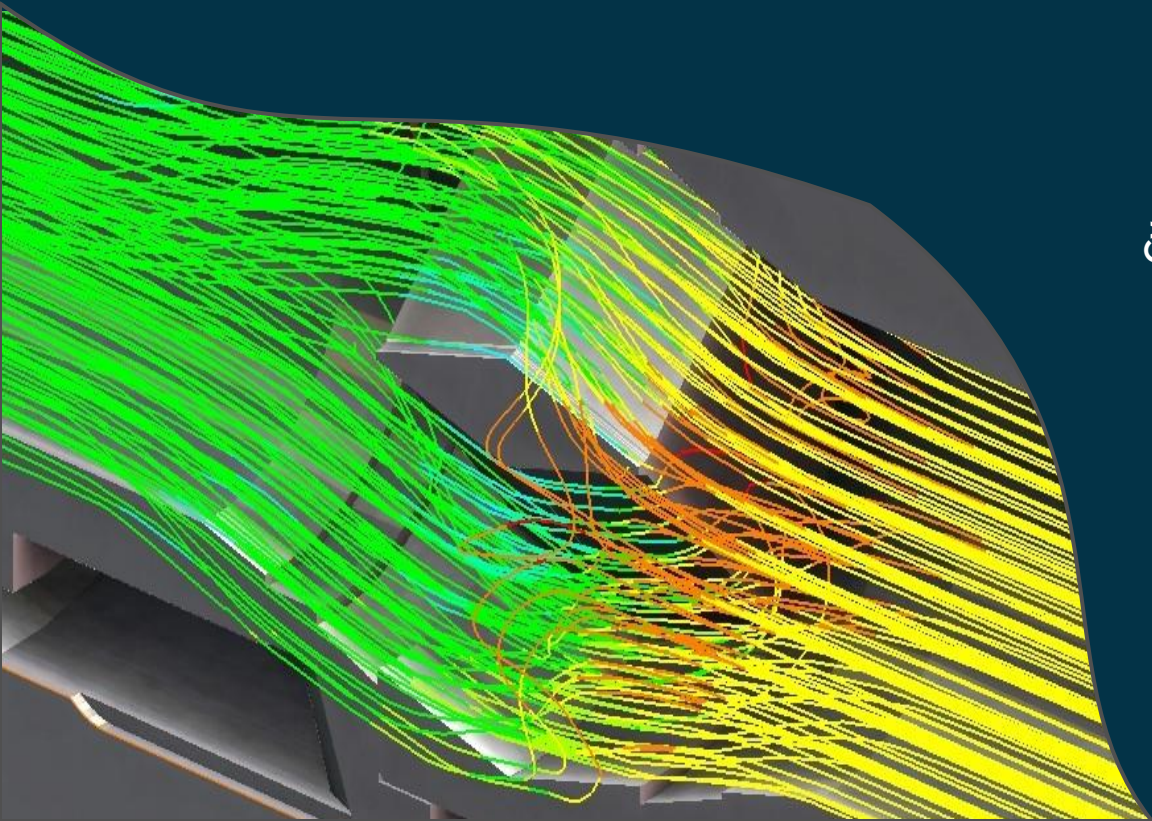
SMART FEATURES

- Provides accurate, high capacity rangeability, calibrated flow control, and increased choke service life in all applications.
- Our design and materials of construction aide in the control of cavitation, erosion, and freezing, even in high-pressure-drop and severe service conditions.
- Tungsten Carbide pie-shaped trim increases flow volume while reducing nominal body size, reducing end user cost.
- Trim design resists freezing in CO2 service. It also has positive shutoff and easily adapts to field applications using electric, hydraulic, and pneumatic actuators.
- Enhanced durability and wear resistance by use of solid Tungsten Carbide wear sleeve in the outlet.
- There are no loose or unsupported parts to cause vibration, noise, or fatigue failures.
- Our design has minimal wear components that are easily replaced, resulting in less downtime, and reduced operational costs. Another benefit, adding to its service life: a second set of orifice wearing edges are available by rotating the discs in the opposite direction.
- API – M/C (EE-.5), Temp (L/U) as standard
- All optional API material classes are available

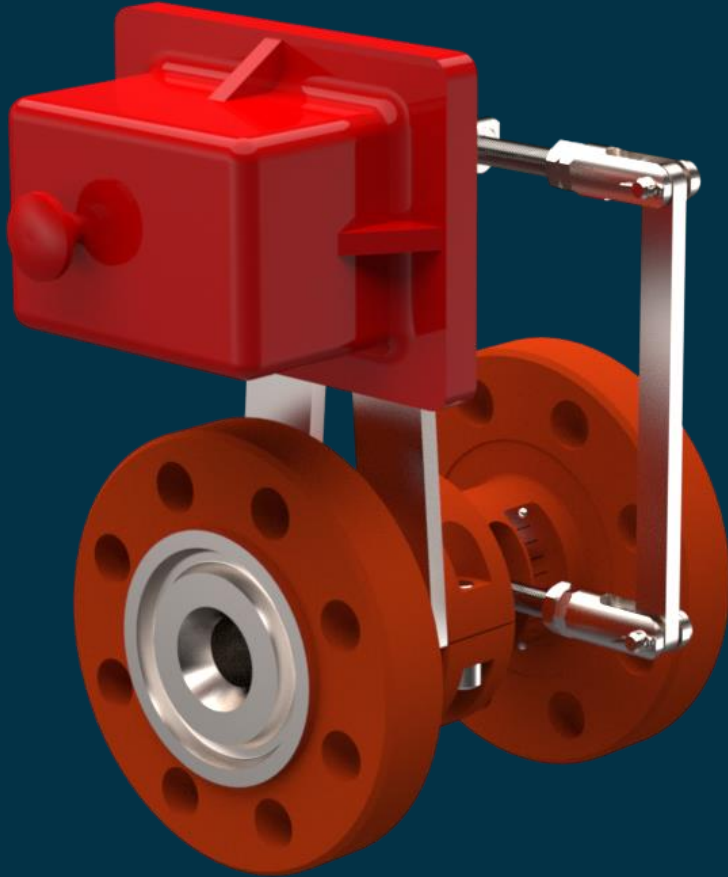


CV DATA & FLOW CURVES

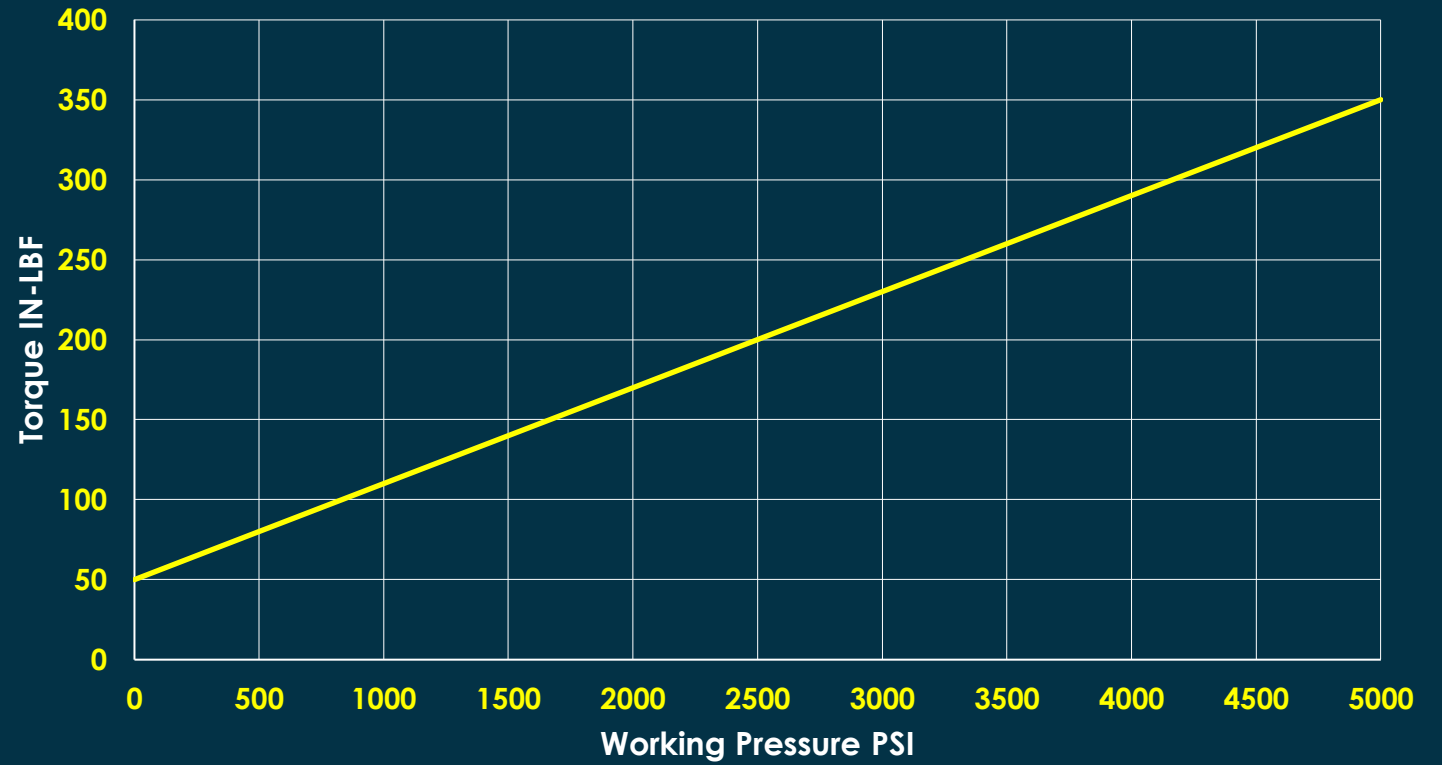
EC1 1" nom body - Max Cv: 23.0

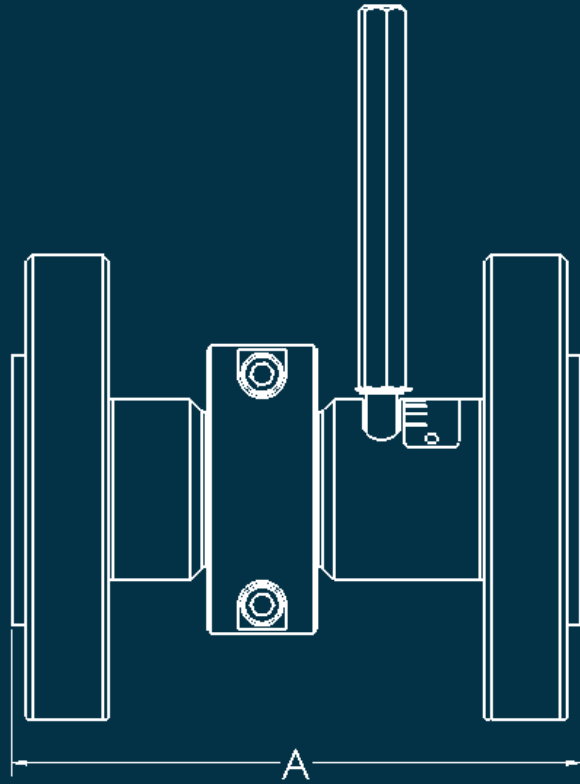


OPERATING TORQUES



Operating Torque vs Working Pressure





EC1 SERIES DIMENSIONS				
Model	End Connection	Standard Trim Size	Standard CV	A Inches
EC1	2" FNPT	0.868	23.0	10.30
	2" ANSI 600# RF	0.868	23.0	10.30
	2" ANSI 900# RF	0.868	23.0	10.30
	2" ANSI 1500# RF	0.868	23.0	10.30
	2" ANSI 600# RTJ	0.868	23.0	10.30
	2" ANSI 900# RTJ	0.868	23.0	10.30
	2" ANSI 1500# RTJ	0.868	23.0	10.30
	2-1/16" API 2K	0.868	23.0	10.30
	2-1/16" API 3K	0.868	23.0	10.30
	2-1/16" API 5K	0.868	23.0	10.30